




HEAVY WEIGHT JACKET / PARKA



Warm & comfortable multi-activity winter parka

-  **OUT:** 100% Oxford polyester | Waterproof 1000 MM
- IN:** 100% polyester taffeta quilt padding
100% polyester anti-pilling micro-fleece on top back panel and collar
-  **S - M - L - XL - 2XL - 3XL**
-  **1 pc/pack & 10 pcs/carton**

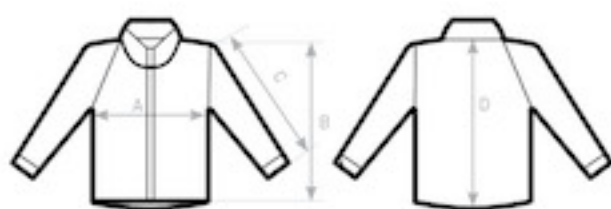


-  **Windproof**
-  **Thermo-insulated**
-  **Waterproof**
-  **ANTI PILLING Antipilling micro-fleece**
-  **Water-repellent**
-  **Critical seams taped**

- Concealed 3 panelled hood with eyelets and flat drawstring with plastic ends
- Full front zip fastener with stormflap
- Ergonomic sleeves & articulated elbow for ease of movement
- 2 front zippered pockets
- 1 inner zippered wallet pocket
- Adjustable cuffs



DUO CONCEPT
with B&C Real+ /women



SIZES [CM]

B&C REAL+ /MEN JM 970	XS	S	M	L	XL	2XL	3XL
A HALF CHEST	-	59,6	62,6	65,6	69,6	73,6	77,6
B BODY LENGTH FROM NECK POINT	-	83	84	85	87	89	91
C SLEEVE LENGTH	-	65,8	66,7	67,7	69,2	70,8	72,4
D CENTER BACK LENGTH	-	79,8	80,9	82	83,8	85,6	87,4

B&C COLLECTION
OUTER WEAR /UNIT