

B&C BLACK TIE LSL /MEN - BK13

THE SHIRT CULTURE
BE INSPIRED



MEDIUM FIT

- Stretch poplin
- 2-button cut-away collar
- Cross stitched mother-of-pearl effect buttons
- 2-button adjustable cuffs
 - a. Angular cuffs & square-shaped gauntlets
 - b. Additional cufflink buttonholes
- Short modern back yoke
- Inside lap seams for perfect finish
- Horizontal last buttonhole
- Square-shaped bottom hem side reinforcement
- Shorter length – can be worn untucked
- Curved bottom hem
- Darts at back panel



- 97% combed cotton - 3% elastane
- Poplin
- 135 g/m² **STRETCH**
- S > 4XL
- 1 pc/pack & 10 pcs/carton



DUO CONCEPT
with B&C Black Tie LSL /women

SIZES [CM]

B&C BLACK TIE LSL /M. SM P21	US	S	M	L	XL	2XL	3XL	4XL	5XL	6XL
A COLLAR TO FIT	CM 37/38	39/40	41/42	43/44	45/46	47/48	49/50	-	-	-
B CHEST TO FIT	INS 143/115	15.5	16/16.5	17/17.5	18	18.5/19	19.5	-	-	-
C CHEST SIZE	CM 92/97	97/102	102/107	107/112	112/117	117/122	122/127	-	-	-
D CENTER BACK LENGTH	CM 73	74	76	78	79	81	82	-	-	-



THE SHIRT CULTURE
BE INSPIRED

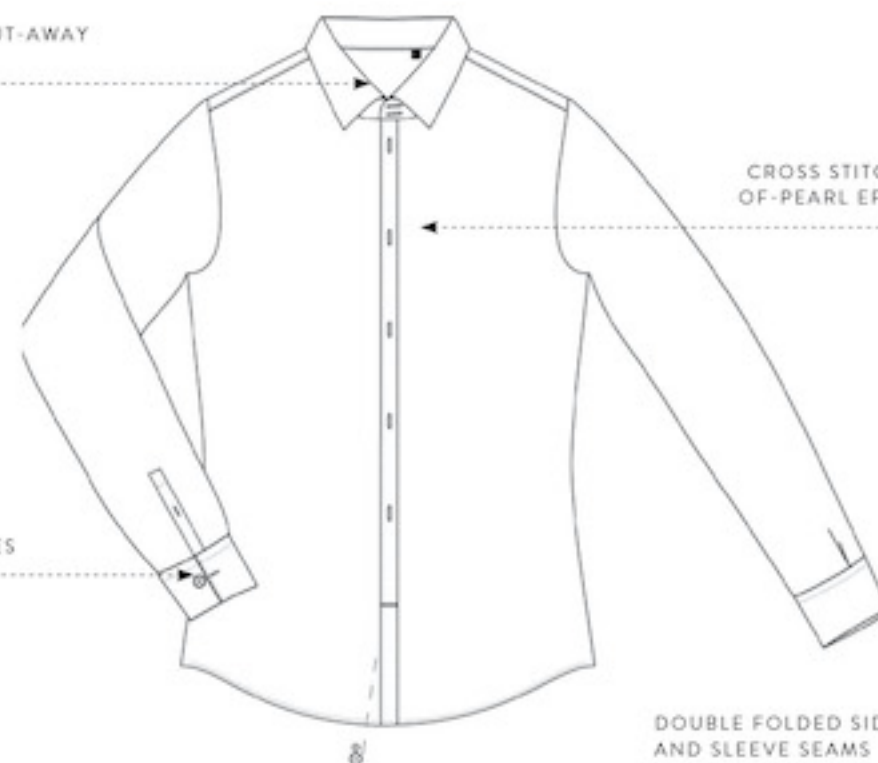


STRETCH MEN'S LONG SLEEVED EASY CARE POPLIN SHIRT

2-BUTTON CUT-AWAY
COLLAR

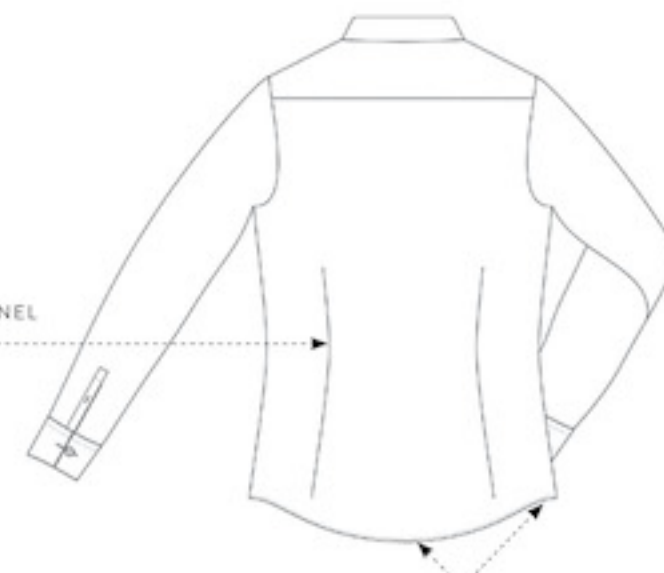
CROSS STITCHED MOTHER-
OF-PEARL EFFECT BUTTONS

ANGULAR
2-BUTTON
ADJUSTABLE
CUFF WITH
ADDITIONAL
CUFFLINK
BUTTONHOLES



DOUBLE FOLDED SIDE
AND SLEEVE SEAMS

DARTS
AT BACK PANEL



CURVED BOTTOM HEM
WITH SQUARE-SHAPED
SIDE REINFORCEMENT